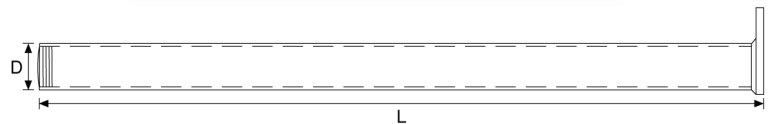
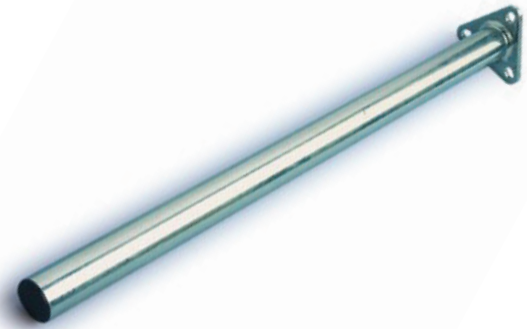


Stainless Steel Mudguard Mounting Arms Tri Bolt Straight

Product Information

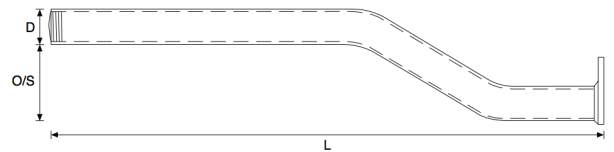
- Traditional 3-Bolt Fixing Method
- Slotted base Plate holes to facilitate easier fitment
- Available in 3 tube diameters
- Supplied with plastic end plugs
- Available straight or cranked
- Stainless Tube Specification 1.4310DP
- **Bespoke arm manufacturing available upon request**



Straight Mounting Arms Triangular Base Plate

Part No.	Length (L)	Diameter (D)
TU35A640-SS	640mm	35mm
TU35A700-SS	700mm	35mm
TU35A780-SS	780mm	35mm
TU42A640-SS	640mm	42mm
TU42A700-SS	700mm	42mm
TU42A780-SS	780mm	42mm
TU48A700-SS	700mm	48mm
TU48A780-SS	780mm	48mm

Stainless Steel Mudguard Mounting Arms Tri Bolt Cranked



Cranked Mounting Arms 100mm Offset Triangular Base Plate

Part No.	Length (L)	Diameter (D)
CR35A700-SS	700mm	35mm
CR35A780-SS	780mm	35mm
CR42A700-SS	700mm	42mm
CR42A780-SS	780mm	42mm
CR48A700-SS	700mm	48mm
CR48A780-SS	780mm	48mm

AVAILABLE ONLY FROM FEATHERWING